

# **Responding Rightly**

as a Christian Community

# **in times of Suffering**

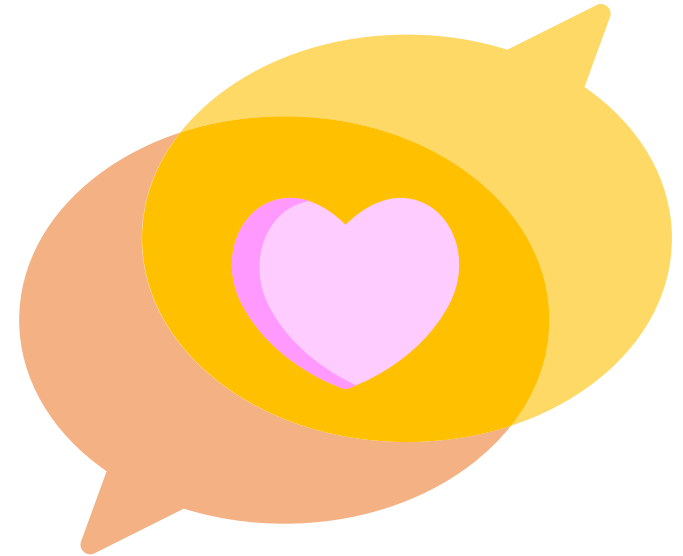
## **(Part 2)**

**1 Peter 4:1 - 11**

[staffmtg.syfc.org.sg](http://staffmtg.syfc.org.sg)

[biblestudy.syfc.org.sg](http://biblestudy.syfc.org.sg)

Eric Teo • younger men • 26 Apr 2022



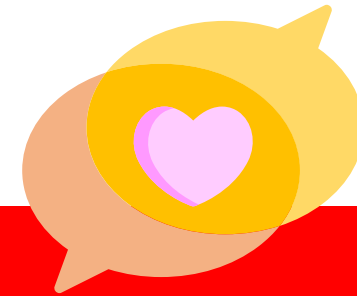
## BROAD DIRECTION:

1:3-12 > Salvation: what God has done for us

1:13-3:7 > Holiness: what God requires of us

**3:8-4:11 > Suffering: what can we expect in this world**

4:12-5:14 > Perseverance: how can we continue in this world to the end



*Within the context of (expected) suffering,*  
**how should we (as a Christian community) respond rightly?**

## A Christian Community's Response in times of Suffering (3:8-22)

1. **Relating among ourselves** with united mind, sympathy, love, tenderness and humility (3:8)

2. **Responding to others** by blessing rather than repay evil (3:9)

For this was also taught during David's time (3:10-12)

by doing good even in suffering (3:13-16)

honoring Christ the Lord as Holy

readily defending our hope with gentleness, respect and good conscience & behaviour

2a. **For it is better to suffer** than to do evil (3:17)

2b. **For Christ also suffered** for our sins to bring us to God (3:18-22)

Appreciating His Victory over Death

Appreciating His Union with God

**Therefore we have every reason to respond well (4:1-2)**

Looking Up > [3:8-22](#) ↗

Looking Down > [4:3-11](#) ↘



READ



UNDERSTAND



REFLECT

## A Christian Community's Response in times of Suffering (3:8-22)

1. Relating among ourselves (3:8)
2. Responding to others (3:9-16)
  - 2a. For it is better to suffer (3:17)
  - 2b. For Christ also suffered (3:18-22)

## Therefore we have every reason to respond well (4:1-2)

Looking Up > [3:8-22](#) ↗

Looking Down > [4:3-11](#) ↘

## A Christian Community's Response in times of Suffering (4:3-11) PART 2

1. Responding to others *by no longer living your old life* (4:3-6)
  - 1a. Expect suffering
  - 1b. Remember God's final judgment
  - 1c. Preach the gospel
2. Relating among ourselves *with an end in mind* (4:7-11)
  - 2a. Show self-control & soberness
  - 2b. Show love earnestly
  - 2c. Show God-driven hospitality & service



READ



UNDERSTAND



REFLECT